

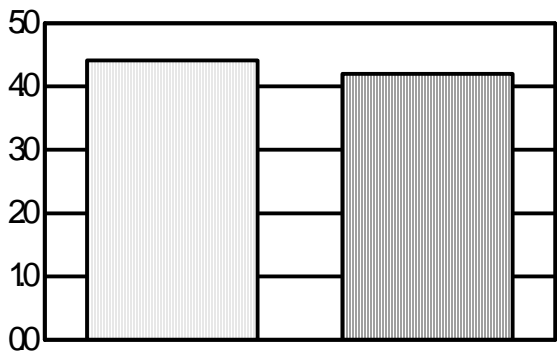


# Exports of Canadian Grain and Wheat Flour

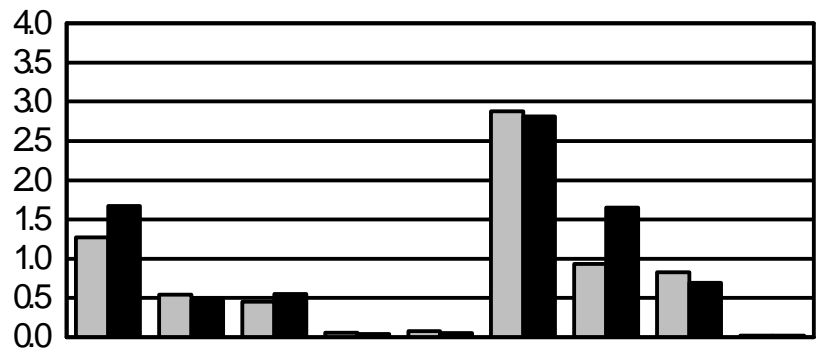
2011-2012 2012-2013

## Year to date

Tonnes (millions)



Wheat (except durum)



Durum Wheat Oats Barley Rye Flaxseed Canola Soybeans Peas Corn

Export clearances of Canadian grains and oilseeds during November totalled 3 222 thousand tonnes. Exports to date – 12 166 thousand - are 683 thousand tonnes (6%) more than those for the same period a year ago.

## TABLE OF CONTENTS

### EXPORTS OF CANADIAN GRAIN AND WHEAT FLOUR

---

Comparative Summary of Canadian Grain Exports.....	3
Clearance of Canadian Grain by Export Position.....	4

#### CLEARANCES OF CANADIAN GRAIN BY SECTOR

##### Table

1	Wheat .....	6
2	Durum Wheat .....	8
3	Oats .....	9
4	Barley .....	10
5	Rye.....	11
6	Flaxseed .....	12
7	Canola .....	13
8	Soybeans .....	14
9	Peas .....	15
10	Corn .....	16
11	Importers of Canadian grains. ....	17
12	Clearance of Canadian Wheat (Including Durum) and Wheat Flour crop year 2008-2009 to 2012-2013 .....	26
13	Custom Exports of Wheat Flour.....	28

##### Notes

- 1) Components in tables may not add exactly to the totals due to rounding.
  - 2) In addition, Statistics Canada reported unlicensed exports to the United States: 291 800 (128 600) tonnes of Wheat excluding Durum, 209 700 (193 800) tonnes of Oats, 41 800 (22 600) tonnes of Rye 17 200 (14 100) tonnes of Flaxseed, 2 900 (23 000) tonnes of Canola, and 108 300(52 500) tonnes of Corn between August and October, 2012. Year ago figures are shown in brackets.
  - 3) Grain may be re-exported to destinations beyond those reported.
  - 4) All shipment tonnage will be allocated to the month of loading completion.
  - 5) All container shipments for Wheat, Durum Wheat and Barley are Canadian Wheat Board grains only.
- ❖ Totals may not agree due to rounding.
  - ❖ 0.0 Less than 50 tonnes
  - ❖ \* Denotes vessels with more than one destination, but total tonnage is shown for only the first destination.

For further information, please contact the Corporate Services of the Canadian Grain Commission at (204) 983-1570.

**(A) Comparative Summary of Canadian Grain Exports  
November 2012  
(in 000's of tonnes)**

	<b>Wheat</b>	<b>Durum wheat</b>	<b>Oats</b>	<b>Barley</b>	<b>Rye</b>	<b>Flaxseed</b>	<b>Canola</b>	<b>Soybean</b>	<b>Peas</b>	<b>Corn</b>	<b>Total</b>
<b>November, 2012</b>	875.7	436.3	89.7	215.1	7.5	12.4	725.3	785.6	55.0	19.6	3,222.2
<b>October, 2012</b>	956.5	530.0	118.3	194.8	8.1	16.4	968.3	829.8	256.4	3.9	3,882.4
<b>November, 2011</b>	1,049.3	474.1	123.8	213.2	8.5	17.9	802.8	539.7	135.5	21.5	3,386.2
<b>Crop Year to Date, 2012-2013</b>	4,201.0r	1,671.1	474.1	547.6	42.4	50.2	2,812.4	1,653.9	689.7	23.5	12,165.8
<b>Crop Year to Date, 2011-2012</b>	4,409.7	1,271.6	544.0	447.2	64.7	81.1	2,882.0	929.5	831.4	21.5	11,482.7
<b>Calendar Year 2012</b>	11,870.1r	3,728.6	1,037.1	1,208.0	72.3	200.5	7,575.8	2,238.8	1,267.6	74.3	29,273.2
<b>Calendar Year 2011</b>	11,746.7	2,986.6	1,036.0	1,010.3	137.0	232.1	6,865.0	1,427.3	2,120.5	691.2	28,252.6

**(B) Clearance of Canadian Grain by Export Position**  
**November 2012**  
*(in 000's of tonnes)*

	Wheat	Durum wheat	Oats	Barley	Rye	Flaxseed	Canola	Soybean	Peas	Corn	Total
<b>Prince Rupert</b>	168.0	-	-	90.3	-	-	153.3	-	-	-	411.6
<b>Vancouver</b>	445.1	96.1	9.4	98.4	3.5	0.8	481.6	121.0	55.0	-	1,310.8
<b>Churchill</b>	-	21.2	-	-	-	-	-	-	-	-	21.2
<b>Thunder Bay</b>	20.7	20.8	29.5	-	-	-	62.5	-	-	-	133.5
<b>Ontario Elevators</b>	3.3	-	2.1	-	-	-	-	81.1	-	11.0	97.5
<b>Quebec</b>	47.5	37.6	-	-	-	-	-	199.0	-	-	284.0
<b>Baie Comeau</b>	30.5	109.6	-	-	-	-	-	62.2	-	-	202.3
<b>Prescott</b>	-	-	-	0.1	-	-	-	-	-	-	0.1
<b>Goderich</b>	10.2	-	-	-	-	-	-	6.4	-	-	16.5
<b>Sarnia</b>	11.1	-	-	-	-	-	-	-	-	8.5	19.7
<b>Montreal</b>	-	59.4	-	-	-	-	-	95.3	-	-	154.7
<b>Port Cartier</b>	25.0	29.8	-	-	-	-	-	49.5	-	-	104.3
<b>Sorel</b>	1.0	3.1	-	-	-	-	-	125.3	-	-	129.4
<b>Three Rivers</b>	4.5	26.2	-	-	-	-	-	45.0	-	-	75.8
<b>Halifax</b>	24.2	-	-	-	-	-	-	-	-	-	24.2
<b>Prairie Elevators</b>	84.7	32.6	48.7	26.3	4.1	11.6	27.8	0.8	-	-	236.7
<b>Total</b>	875.7	436.3	89.7	215.1	7.5	12.4	725.3	785.6	55.0	19.6	3,222.2

**(C) Clearance of Canadian Grain by Export Position  
Accumulative August 2012 to November 2012  
(in 000's of tonnes)**

	Wheat	Durum wheat	Oats	Barley	Rye	Flaxseed	Canola	Soybean	Peas	Corn	Total
<b>Prince Rupert</b>	722.4	2.9	-	218.8	-	-	500.8	-	-	-	1,444.9
<b>Vancouver</b>	1,955.4	242.3	9.4	170.5	6.8	20.9	1,928.1	237.3	687.3	-	5,258.0
<b>Churchill</b>	294.0	28.0	-	49.3	-	-	38.8	-	-	-	410.1
<b>Thunder Bay</b>	89.5	142.1	79.1	-	-	-	248.5	-	-	-	559.3
<b>Ontario Elevators</b>	14.2	-	2.1	-	-	-	-	103.4	-	11.0	130.7
<b>Quebec</b>	191.5	259.8	-	-	-	-	-	342.5	-	-	793.8
<b>Baie Comeau</b>	123.9	448.1	-	-	-	-	-	178.4	-	-	750.4
<b>Owen Sound</b>	13.8	-	-	-	-	-	-	-	-	-	13.8
<b>Prescott</b>	-	-	-	0.1	-	-	-	-	-	-	0.1
<b>Goderich</b>	67.6	-	-	-	-	-	-	28.1	-	-	95.7
<b>Sarnia</b>	58.0	-	-	-	-	-	-	-	-	12.4	70.4
<b>Montreal</b>	70.0	267.5	-	-	-	-	-	180.6	-	-	518.1
<b>Port Cartier</b>	95.0	57.3	-	-	-	-	-	135.7	-	-	288.0
<b>Sorel</b>	19.1	18.1	-	-	-	-	-	376.8	-	-	414.0
<b>Three Rivers</b>	115.8	108.1	-	-	-	-	-	63.7	-	-	287.6
<b>Halifax</b>	24.2	-	-	-	-	-	-	-	-	-	24.2
<b>Prairie Elevators</b>	346.7	96.8	383.5	108.9	35.6	29.3	96.2	7.4	2.3	-	1,106.6
<b>Total</b>	4,201.0	1,671.1	474.1	547.6	42.4	50.2	2,812.4	1,653.9	689.7	23.5	12,165.8

**Clearance of Canadian Grain by Sector**  
**November 2012**  
*(in 000's of tonnes)*

Wheat		Via Pacific Seaboard	Via Thunder Bay	Via Eastern Elevators	Via Atlantic Seaboard	Via Prairie Elevators	Total	2012-2013 Crop Year to Date	2011-2012 Crop Year to Date
Western Europe	Belgium	-	-	10.6	-	-	10.6	10.6	5.0
	Italy	-	-	11.0	-	-	11.0	76.7	100.3
	Netherlands	-	-	-	-	-	-	-	9.7
	Portugal	-	-	-	-	-	-	27.9	-
	Spain	-	-	-	-	-	-	3.8	-
	United Kingdom	-	-	19.8	-	-	19.8	103.6	130.5
	<b>Total</b>	-	-	41.5	-	-	41.5	222.7	245.6
Africa	East Africa	-	-	-	-	-	-	41.1	74.1
	Ghana	-	-	-	-	-	-	28.2	-
	Kenya	-	-	-	-	-	-	18.7	-
	Morocco	-	-	-	-	-	-	14.0	-
	Mozambique	-	-	-	-	-	-	10.0	-
	Namibia	-	-	-	-	-	-	10.7	-
	Nigeria	-	-	-	-	-	-	91.0	81.9
	South Africa	-	-	-	-	-	-	22.1	35.3
	Sudan	-	-	-	-	-	-	36.0	176.8
	Tanzania	-	-	-	-	-	-	13.2	-
	Uganda	-	-	-	-	-	-	9.9	-
	West Africa	-	-	36.5	-	-	36.5	158.4	149.1
	<b>Total</b>	-	-	36.5	-	-	36.5	453.2	517.1
Asia	Bangladesh	-	-	-	-	-	-	164.3	250.0
	China P.R.	-	-	-	-	-	-	115.5	56.8
	Indonesia	51.7	-	-	-	-	51.7	280.7	182.8
	Iraq	-	-	-	-	-	-	52.5	105.0
	Japan	108.7	-	-	-	-	108.7	474.9	323.4
	Korea, South	11.0	-	-	-	-	11.0	166.6	49.4
	Malaysia	25.5	-	-	-	-	25.5	84.2	49.6
	Philippines	24.5	-	-	-	-	24.5	24.5	22.6
	Saudi Arabia	57.8	-	-	-	-	57.8	115.5	231.0
	Sri Lanka	-	-	-	-	-	-	222.2	135.5
	Taiwan	-	-	-	-	-	-	-	0.5
	Thailand	-	-	-	-	-	-	22.0	12.3
	United Arab Emirates	-	-	-	-	-	-	36.0	63.2
	Vietnam	44.3	-	-	-	-	44.3	44.3	-
<b>Total</b>	323.4	-	-	-	-	323.4	1,803.3	1,482.0	

**Clearance of Canadian Grain by Sector**  
**November 2012**  
*(in 000's of tonnes)*

<b>Wheat</b>		<b>Via Pacific Seaboard</b>	<b>Via Thunder Bay</b>	<b>Via Eastern Elevators</b>	<b>Via Atlantic Seaboard</b>	<b>Via Prairie Elevators</b>	<b>Total</b>	<b>2012-2013 Crop Year to Date</b>	<b>2011-2012 Crop Year to Date</b>
<b>Western Hemisphere</b>	<b>Caribbean</b>	-	-	-	-	-	-	-	9.1
	<b>Chile</b>	38.9	-	-	-	-	38.9	77.4	77.0
	<b>Colombia</b>	68.8	-	-	-	-	68.8	199.7	309.0
	<b>Costa Rica</b>	18.7	-	-	-	-	18.7	34.5	35.3
	<b>Cuba</b>	-	-	-	-	-	-	95.0	91.3
	<b>Ecuador</b>	59.0	-	-	-	-	59.0	132.6	140.1
	<b>Guyana</b>	-	-	-	-	-	-	8.1	16.2
	<b>Mexico</b>	44.1	-	-	24.2	4.6	72.9	311.0	576.4
	<b>Peru</b>	60.3	-	-	-	-	60.3	192.4	147.0
	<b>Puerto Rico</b>	-	-	3.3	-	-	3.3	22.9	37.3
	<b>United States</b>	-	20.7	21.3	-	80.0	122.0	498.3r	472.9
	<b>Venezuela</b>	-	-	30.5	-	-	30.5	149.9	253.5
	<b>Total</b>	289.7	20.7	55.1	24.2	84.7	474.4	1,721.7	2,165.0
<b>Total - All Countries</b>		613.1	20.7	133.0	24.2	84.7	875.7	4,201.0	4,409.7

**Clearance of Canadian Grain by Sector**  
**November 2012**  
*(in 000's of tonnes)*

<b>Durum wheat</b>		Via Pacific Seaboard	Via Churchill	Via Thunder Bay	Via Eastern Elevators	Via Prairie Elevators	Total	2012-2013 Crop Year to Date	2011-2012 Crop Year to Date
<b>Western Europe</b>	<b>Belgium</b>	-	-	20.8	62.7	-	83.5	241.5	68.4
	<b>France</b>	-	-	-	-	-	-	-	22.0
	<b>Germany</b>	-	-	-	-	-	-	-	37.8
	<b>Italy</b>	52.5	-	-	-	-	52.5	269.0	387.2
	<b>Netherlands</b>	-	-	-	-	-	-	11.0	18.1
	<b>Portugal</b>	-	-	-	-	-	-	22.0	-
	<b>Spain</b>	-	-	-	-	-	-	65.4	-
	<b>Total</b>	52.5	-	20.8	62.7	-	136.0	608.9	533.4
<b>Africa</b>	<b>Algeria</b>	-	-	-	103.4	-	103.4	311.7	156.7
	<b>Morocco</b>	-	21.2	-	88.5	-	109.7	385.7	70.0
	<b>Nigeria</b>	-	-	-	-	-	-	18.9	-
	<b>South Africa</b>	-	-	-	-	-	-	8.0	-
	<b>Tunisia</b>	-	-	-	-	-	-	-	54.7
	<b>West Africa</b>	-	-	-	-	-	-	5.5	-
	<b>Total</b>	-	21.2	-	191.9	-	213.1	729.9	281.4
<b>Asia</b>	<b>Indonesia</b>	-	-	-	-	-	-	5.0	-
	<b>Japan</b>	21.9	-	-	-	-	21.9	62.7	68.4
	<b>Korea, South</b>	-	-	-	-	-	-	-	45.2
	<b>Sri Lanka</b>	-	-	-	-	-	-	-	10.3
	<b>Total</b>	21.9	-	-	-	-	21.9	67.7	123.9
<b>Western Hemisphere</b>	<b>Colombia</b>	-	-	-	-	-	-	-	0.7
	<b>Costa Rica</b>	1.7	-	-	-	-	1.7	5.9	6.2
	<b>Cuba</b>	-	-	-	-	-	-	4.5	10.2
	<b>Ecuador</b>	-	-	-	-	-	-	2.9	-
	<b>Mexico</b>	-	-	-	-	-	-	-	29.4
	<b>Peru</b>	-	-	-	-	-	-	46.1	37.9
	<b>United States</b>	-	-	-	-	32.6	32.6	96.8	138.8
	<b>Venezuela</b>	20.0	-	-	11.0	-	31.0	108.6	109.5
	<b>Total</b>	21.7	-	-	11.0	32.6	65.3	264.7	332.8
<b>Total - All Countries</b>		96.1	21.2	20.8	265.6	32.6	436.3	1,671.1	1,271.6



**Clearance of Canadian Grain by Sector**  
**November 2012**  
*(in 000's of tonnes)*

<b>Oats</b>		<b>Via Pacific Seaboard</b>	<b>Via Thunder Bay</b>	<b>Via Eastern Elevators</b>	<b>Via Prairie Elevators</b>	<b>Total</b>	<b>2012-2013 Crop Year to Date</b>	<b>2011-2012 Crop Year to Date</b>
<b>Asia</b>	<b>Japan</b>	-	-	-	-	-	-	2.3
	<b>Total</b>	-	-	-	-	-	-	2.3
<b>Western Hemisphere</b>	<b>Ecuador</b>	4.9	-	-	-	4.9	4.9	-
	<b>Mexico</b>	-	-	-	0.7	0.7	2.1	2.2
	<b>Peru</b>	4.5	-	-	-	4.5	4.5	-
	<b>Puerto Rico</b>	-	-	2.1	-	2.1	2.1	2.2
	<b>United States</b>	-	29.5	-	48.0	77.5	460.5	537.3
	<b>Total</b>	9.4	29.5	2.1	48.7	89.7	474.1	541.7
<b>Total - All Countries</b>		9.4	29.5	2.1	48.7	89.7	474.1	544.0

**Clearance of Canadian Grain by Sector**  
**November 2012**  
*(in 000's of tonnes)*

<b>Barley</b>		<b>Via Pacific Seaboard</b>	<b>Via Eastern Elevators</b>	<b>Via Prairie Elevators</b>	<b>Total</b>	<b>2012-2013 Crop Year to Date</b>	<b>2011-2012 Crop Year to Date</b>
<b>Africa</b>	<b>South Africa</b>	15.8	-	-	15.8	15.8	31.5
	<b>Total</b>	15.8	-	-	15.8	15.8	31.5
<b>Asia</b>	<b>China P.R.</b>	-	-	-	-	-	85.2
	<b>Japan</b>	119.3	-	-	119.3	248.9	94.4
	<b>Saudi Arabia</b>	-	-	-	-	109.8	118.3
	<b>United Arab Emirates</b>	28.2	-	-	28.2	38.6	-
	<b>Total</b>	147.5	-	-	147.5	397.2	297.9
<b>Western Hemisphere</b>	<b>Colombia</b>	25.3	-	-	25.3	25.3	29.1
	<b>Ecuador</b>	-	-	-	-	-	3.2
	<b>United States</b>	0.1	0.1	26.3	26.5	109.3	85.6
	<b>Total</b>	25.4	0.1	26.3	51.8	134.6	117.9
<b>Total - All Countries</b>		188.7	0.1	26.3	215.1	547.6	447.2

**Clearance of Canadian Grain by Sector**  
**November 2012**  
*(in 000's of tonnes)*

<b>Rye</b>		<b>Via Pacific Seaboard</b>	<b>Via Prairie Elevators</b>	<b>Total</b>	<b>2012-2013 Crop Year to Date</b>	<b>2011-2012 Crop Year to Date</b>
<b>Asia</b>	<b>Japan</b>	3.5	-	3.5	6.8	25.9
	<b>Total</b>	3.5	-	3.5	6.8	25.9
<b>Western Hemisphere</b>	<b>United States</b>	-	4.1	4.1	35.6	38.8
	<b>Total</b>	-	4.1	4.1	35.6	38.8
<b>Total - All Countries</b>		3.5	4.1	7.5	42.4	64.7

**Clearance of Canadian Grain by Sector**  
**November 2012**  
*(in 000's of tonnes)*

<b>Flaxseed</b>		<b>Via Pacific Seaboard</b>	<b>Via Prairie Elevators</b>	<b>Total</b>	<b>2012-2013 Crop Year to Date</b>	<b>2011-2012 Crop Year to Date</b>
<b>Western Europe</b>	<b>Belgium</b>	-	-	-	-	17.3
	<b>Total</b>	-	-	-	-	17.3
<b>Asia</b>	<b>China P.R.</b>	-	-	-	19.1	28.3
	<b>Japan</b>	0.8	-	0.8	1.8	1.6
	<b>Total</b>	0.8	-	0.8	20.9	29.9
<b>Western Hemisphere</b>	<b>Mexico</b>	-	-	-	0.1	0.3
	<b>United States</b>	-	11.6	11.6	29.2	33.6
	<b>Total</b>	-	11.6	11.6	29.3	33.9
<b>Total - All Countries</b>		0.8	11.6	12.4	50.2	81.1

**Clearance of Canadian Grain by Sector**  
**November 2012**  
*(in 000's of tonnes)*

<b>Canola</b>		<b>Via Pacific Seaboard</b>	<b>Via Thunder Bay</b>	<b>Via Prairie Elevators</b>	<b>Total</b>	<b>2012-2013 Crop Year to Date</b>	<b>2011-2012 Crop Year to Date</b>
<b>Western Europe</b>	<b>Belgium</b>	-	-	-	-	-	19.3
	<b>France</b>	-	-	-	-	-	40.0
	<b>Portugal</b>	-	-	-	-	43.6	96.7
	<b>Total</b>	-	-	-	-	43.6	156.1
<b>Asia</b>	<b>Bangladesh</b>	-	-	-	-	8.4	97.2
	<b>China P.R.</b>	228.4	-	-	228.4	976.7	708.9
	<b>Japan</b>	222.8	-	-	222.8	862.9	785.3
	<b>Korea, South</b>	-	-	-	-	10.8	-
	<b>Pakistan</b>	-	-	-	-	-	222.2
	<b>United Arab Emirates</b>	93.9	-	-	93.9	185.6	138.3
	<b>Total</b>	545.0	-	-	545.0	2,044.5	1,951.8
<b>Western Hemisphere</b>	<b>Mexico</b>	89.9	62.5	-	152.5	628.1	596.7
	<b>United States</b>	-	-	27.8	27.8	96.2	177.4
	<b>Total</b>	89.9	62.5	27.8	180.3	724.3	774.1
<b>Total - All Countries</b>		634.9	62.5	27.8	725.3	2,812.4	2,882.0

**Clearance of Canadian Grain by Sector**  
**November 2012**  
*(in 000's of tonnes)*

<b>Soybean</b>		<b>Via Pacific Seaboard</b>	<b>Via Eastern Elevators</b>	<b>Via Prairie Elevators</b>	<b>Total</b>	<b>2012-2013 Crop Year to Date</b>	<b>2011-2012 Crop Year to Date</b>
<b>Western Europe</b>	<b>Belgium</b>	-	62.9	-	62.9	112.8	100.6
	<b>Denmark</b>	-	-	-	-	9.7	19.4
	<b>France</b>	-	32.0	-	32.0	65.0	68.0
	<b>Germany</b>	-	20.0	-	20.0	63.1	-
	<b>Italy</b>	-	80.4	-	80.4	80.4	-
	<b>Netherlands</b>	-	126.6	-	126.6	225.1	325.3
	<b>Portugal</b>	-	-	-	-	-	15.3
	<b>Spain</b>	-	-	-	-	20.6	36.1
	<b>United Kingdom</b>	-	6.4	-	6.4	6.4	18.5
	<b>Total</b>	-	328.2	-	328.2	583.0	583.2
<b>Africa</b>	<b>Egypt</b>	-	96.2	-	96.2	161.4	84.3
	<b>Total</b>	-	96.2	-	96.2	161.4	84.3
<b>Asia</b>	<b>China P.R.</b>	121.0	153.7	-	274.7	812.3	146.4
	<b>Iran</b>	-	67.5	-	67.5	67.5	-
	<b>Israel</b>	-	6.1	-	6.1	6.1	-
	<b>Japan</b>	-	12.1	-	12.1	12.1	-
	<b>Turkey</b>	-	-	-	-	-	10.8
	<b>Vietnam</b>	-	-	-	-	-	65.8
	<b>Total</b>	121.0	239.4	-	360.4	898.0	223.1
<b>Western Hemisphere</b>	<b>Ecuador</b>	-	-	-	-	-	19.8
	<b>United States</b>	-	-	0.8	0.8	11.4	19.2
	<b>Total</b>	-	-	0.8	0.8	11.4	38.9
<b>Total - All Countries</b>		121.0	663.8	0.8	785.6	1,653.9	929.5

**Clearance of Canadian Grain by Sector**  
**November 2012**  
*(in 000's of tonnes)*

Peas		Via Pacific Seaboard	Total	2012-2013 Crop Year to Date	2011-2012 Crop Year to Date
Western Europe	Belgium	-	-	22.4	-
	Spain	-	-	33.3	-
	<b>Total</b>	-	-	55.8	-
Asia	Bangladesh	30.0	30.0	30.0	118.7
	China P.R.	11.0	11.0	213.2	244.6
	India	14.0	14.0	388.1	444.1
	Pakistan	-	-	-	0.1
	<b>Total</b>	55.0	55.0	631.3	807.5
Western Hemisphere	Cuba	-	-	-	22.0
	Mexico	-	-	1.5	0.2
	United States	-	-	1.2	1.6
	<b>Total</b>	-	-	2.6	23.9
<b>Total - All Countries</b>		55.0	55.0	689.7	831.4

**Clearance of Canadian Grain by Sector**  
**November 2012**  
*(in 000's of tonnes)*

<b>Corn</b>		Via Eastern Elevators	Total	2012-2013 Crop Year to Date	2011-2012 Crop Year to Date
<b>Western Hemisphere</b>	<b>Puerto Rico</b>	11.0	11.0	11.0	21.5
	<b>United States</b>	8.5	8.5	12.4	0.1
	<b>Total</b>	19.6	19.6	23.5	21.5
<b>Total - All Countries</b>		19.6	19.6	23.5	21.5



**Importers of Canadian Grains**  
**November 2012**  
*(in 000's of tonnes)*

<b>Wheat</b>	<b>November 2012</b>	<b>2012-2013 Crop Year to Date</b>	<b>2011-2012 Crop Year to Date</b>
<b>United States</b>	122.0	498.3r	472.9
<b>Japan</b>	108.7	474.9	323.4
<b>Mexico</b>	72.9	311.0	576.4
<b>Indonesia</b>	51.7	280.7	182.8
<b>Sri Lanka</b>	-	222.2	135.5
<b>Colombia</b>	68.8	199.7	309.0
<b>Peru</b>	60.3	192.4	147.0
<b>Korea, South</b>	11.0	166.6	49.4
<b>Bangladesh</b>	-	164.3	250.0
<b>West Africa</b>	36.5	158.4	149.1
<b>Venezuela</b>	30.5	149.9	253.5
<b>Ecuador</b>	59.0	132.6	140.1
<b>China P.R.</b>	-	115.5	56.8
<b>Saudi Arabia</b>	57.8	115.5	231.0
<b>United Kingdom</b>	19.8	103.6	130.5
<b>Cuba</b>	-	95.0	91.3
<b>Nigeria</b>	-	91.0	81.9
<b>Malaysia</b>	25.5	84.2	49.6
<b>Chile</b>	38.9	77.4	77.0
<b>Italy</b>	11.0	76.7	100.3
<b>Iraq</b>	-	52.5	105.0
<b>Vietnam</b>	44.3	44.3	-
<b>East Africa</b>	-	41.1	74.1
<b>United Arab Emirates</b>	-	36.0	63.2
<b>Sudan</b>	-	36.0	176.8
<b>Costa Rica</b>	18.7	34.5	35.3
<b>Ghana</b>	-	28.2	-
<b>Portugal</b>	-	27.9	-
<b>Philippines</b>	24.5	24.5	22.6
<b>Puerto Rico</b>	3.3	22.9	37.3
<b>South Africa</b>	-	22.1	35.3
<b>Thailand</b>	-	22.0	12.3
<b>Kenya</b>	-	18.7	-
<b>Morocco</b>	-	14.0	-

**Importers of Canadian Grains**  
**November 2012**  
*(in 000's of tonnes)*

Wheat	November 2012	2012-2013 Crop Year to Date	2011-2012 Crop Year to Date
<b>Tanzania</b>	-	13.2	-
<b>Namibia</b>	-	10.7	-
<b>Belgium</b>	10.6	10.6	5.0
<b>Mozambique</b>	-	10.0	-
<b>Uganda</b>	-	9.9	-
<b>Guyana</b>	-	8.1	16.2
<b>Spain</b>	-	3.8	-
<b>Caribbean</b>	-	-	9.1
<b>Netherlands</b>	-	-	9.7
<b>Taiwan</b>	-	-	0.5
<b>Total</b>	875.7	4,201.0	4,409.7

**Importers of Canadian Grains**  
**November 2012**  
*(in 000's of tonnes)*

<b>Durum wheat</b>	<b>November 2012</b>	<b>2012-2013 Crop Year to Date</b>	<b>2011-2012 Crop Year to Date</b>
<b>Morocco</b>	109.7	385.7	70.0
<b>Algeria</b>	103.4	311.7	156.7
<b>Italy</b>	52.5	269.0	387.2
<b>Belgium</b>	83.5	241.5	68.4
<b>Venezuela</b>	31.0	108.6	109.5
<b>United States</b>	32.6	96.8	138.8
<b>Spain</b>	-	65.4	-
<b>Japan</b>	21.9	62.7	68.4
<b>Peru</b>	-	46.1	37.9
<b>Portugal</b>	-	22.0	-
<b>Nigeria</b>	-	18.9	-
<b>Netherlands</b>	-	11.0	18.1
<b>South Africa</b>	-	8.0	-
<b>Costa Rica</b>	1.7	5.9	6.2
<b>West Africa</b>	-	5.5	-
<b>Indonesia</b>	-	5.0	-
<b>Cuba</b>	-	4.5	10.2
<b>Ecuador</b>	-	2.9	-
<b>France</b>	-	-	22.0
<b>Germany</b>	-	-	37.8
<b>Colombia</b>	-	-	0.7
<b>Korea, South</b>	-	-	45.2
<b>Mexico</b>	-	-	29.4
<b>Sri Lanka</b>	-	-	10.3
<b>Tunisia</b>	-	-	54.7
<b>Total</b>	436.3	1,671.1	1,271.6

**Importers of Canadian Grains**  
**November 2012**  
*(in 000's of tonnes)*

Oats	November 2012	2012-2013 Crop Year to Date	2011-2012 Crop Year to Date
United States	77.5	460.5	537.3
Ecuador	4.9	4.9	-
Peru	4.5	4.5	-
Puerto Rico	2.1	2.1	2.2
Mexico	0.7	2.1	2.2
Japan	-	-	2.3
<b>Total</b>	89.7	474.1	544.0

Barley	November 2012	2012-2013 Crop Year to Date	2011-2012 Crop Year to Date
United States	26.5	109.3	85.6
Ecuador	-	-	3.2
Japan	119.3	248.9	94.4
Saudi Arabia	-	109.8	118.3
United Arab Emirates	28.2	38.6	-
Colombia	25.3	25.3	29.1
South Africa	15.8	15.8	31.5
China P.R.	-	-	85.2
<b>Total</b>	215.1	547.6	447.2

Rye	November 2012	2012-2013 Crop Year to Date	2011-2012 Crop Year to Date
United States	4.1	35.6	38.8
Japan	3.5	6.8	25.9
<b>Total</b>	7.5	42.4	64.7

***Importers of Canadian Grains  
November 2012  
(in 000's of tonnes)***

<b>Flaxseed</b>	<b>November 2012</b>	<b>2012-2013 Crop Year to Date</b>	<b>2011-2012 Crop Year to Date</b>
<b>United States</b>	11.6	29.2	33.6
<b>Mexico</b>	-	0.1	0.3
<b>Japan</b>	0.8	1.8	1.6
<b>China P.R.</b>	-	19.1	28.3
<b>Belgium</b>	-	-	17.3
<b>Total</b>	12.4	50.2	81.1

**Importers of Canadian Grains**  
**November 2012**  
*(in 000's of tonnes)*

<b>Canola</b>	<b>November 2012</b>	<b>2012-2013 Crop Year to Date</b>	<b>2011-2012 Crop Year to Date</b>
<b>China P.R.</b>	228.4	976.7	708.9
<b>Japan</b>	222.8	862.9	785.3
<b>Mexico</b>	152.5	628.1	596.7
<b>United Arab Emirates</b>	93.9	185.6	138.3
<b>United States</b>	27.8	96.2	177.4
<b>Portugal</b>	-	43.6	96.7
<b>Korea, South</b>	-	10.8	-
<b>Bangladesh</b>	-	8.4	97.2
<b>Belgium</b>	-	-	19.3
<b>France</b>	-	-	40.0
<b>Pakistan</b>	-	-	222.2
<b>Total</b>	725.3	2,812.4	2,882.0

**Importers of Canadian Grains**  
**November 2012**  
*(in 000's of tonnes)*

<b>Soybean</b>	<b>November 2012</b>	<b>2012-2013 Crop Year to Date</b>	<b>2011-2012 Crop Year to Date</b>
<b>China P.R.</b>	274.7	812.3	146.4
<b>Netherlands</b>	126.6	225.1	325.3
<b>Egypt</b>	96.2	161.4	84.3
<b>Belgium</b>	62.9	112.8	100.6
<b>Italy</b>	80.4	80.4	-
<b>Iran</b>	67.5	67.5	-
<b>France</b>	32.0	65.0	68.0
<b>Germany</b>	20.0	63.1	-
<b>Spain</b>	-	20.6	36.1
<b>Japan</b>	12.1	12.1	-
<b>United States</b>	0.8	11.4	19.2
<b>Denmark</b>	-	9.7	19.4
<b>United Kingdom</b>	6.4	6.4	18.5
<b>Israel</b>	6.1	6.1	-
<b>Ecuador</b>	-	-	19.8
<b>Portugal</b>	-	-	15.3
<b>Turkey</b>	-	-	10.8
<b>Vietnam</b>	-	-	65.8
<b>Total</b>	785.6	1,653.9	929.5

**Importers of Canadian Grains**  
**November 2012**  
*(in 000's of tonnes)*

<b>Peas</b>	<b>November 2012</b>	<b>2012-2013 Crop Year to Date</b>	<b>2011-2012 Crop Year to Date</b>
<b>India</b>	14.0	388.1	444.1
<b>China P.R.</b>	11.0	213.2	244.6
<b>Spain</b>	-	33.3	-
<b>Bangladesh</b>	30.0	30.0	118.7
<b>Belgium</b>	-	22.4	-
<b>Mexico</b>	-	1.5	0.2
<b>United States</b>	-	1.2	1.6
<b>Cuba</b>	-	-	22.0
<b>Pakistan</b>	-	-	0.1
<b>Total</b>	55.0	689.7	831.4



***Importers of Canadian Grains  
November 2012  
(in 000's of tonnes)***

<b>Corn</b>	<b>November 2012</b>	<b>2012-2013 Crop Year to Date</b>	<b>2011-2012 Crop Year to Date</b>
<b>United States</b>	8.5	12.4	0.1
<b>Puerto Rico</b>	11.0	11.0	21.5
<b>Total</b>	19.6	23.5	21.5

**Clearance of Canadian Wheat (Including Durum) and Wheat Flour †**  
**(A) Monthly Export Shipment by Clearance Sector - Crop Years 2008-2009 to 2012-2013**  
**(in 000's of tonnes)**

	2012-2013		2011-2012		2010-2011		2009-2010		2008-2009	
	November	Crop year to date	November	Crop year to date	November	Crop year to date	November	Crop year to date	November	Crop year to date
<b>Canadian Pacific Seaboard</b>	709.2	2,922.9	723.2	2,798.7	625.4	2,459.1	897.6	3,270.0	707.6	2,209.9
<b>Churchill</b>	21.2	322.0	-	507.8	26.3	600.7	-	516.8	-	424.4
<b>Thunder Bay Direct</b>	41.4	231.7	61.0	100.7	43.4	147.2	9.4	31.0	59.8	148.1
<b>Eastern Transfer Elevators</b>	398.7	1,927.9	600.2	1,911.3	520.4	1,725.1	485.3	1,515.6	649.0	1,998.5
<b>Canadian Atlantic Seaboard</b>	24.2	24.2	-	8.0	-	-	-	-	-	-
<b>Prairie Elevators Direct</b>	117.3	443.4	139.1	354.9	97.0	317.0	112.3	401.0	140.8	423.2
<b>Total Wheat</b>	1,312.0	5,872.0	1,523.4	5,681.3	1,312.5	5,249.0	1,504.6	5,734.3	1,557.1	5,204.1
<b>Wheat Flour</b>	-	43.1	-	69.8	-	61.6	-	59.4	-	69.7
<b>TOTAL WHEAT AND WHEAT FLOUR</b>	1,312.0	5,915.1	1,523.4	5,751.1	1,312.5	5,310.6	1,504.6	5,793.7	1,557.1	5,273.9

**Clearance of Canadian Wheat (Including Durum) and Wheat Flour †  
 (B) Total Monthly Clearances, Crop Years 2008-2009 to 2012-2013  
 (in 000's of tonnes)**

	2012-2013	2011-2012	2010-2011	2009-2010	2008-2009
<b>August</b>	1,518.9r	1,356.7	1,331.6	1,392.6	1,129.5
<b>September</b>	1,583.3	1,462.0	1,252.1	1,396.9	1,075.2
<b>October</b>	1,500.9r	1,408.9	1,414.4	1,499.6	1,512.1
<b>November</b>	1,312.0	1,523.4	1,312.5	1,504.6	1,557.1
<b>Total</b>	5,915.1	5,751.1	5,310.6	5,793.7	5,273.9

**Custom Exports of Wheat Flour †**  
**October 2012**  
*(in metric tonnes)*

WHEAT FLOUR		October, 2012	October, 2011	2012 Crop year to date	2011 Crop year to date
Western Europe	Denmark	-	0	-	0
	France	9	2	60	11
	Germany	-	0	-	28
	Greece	89	141	290	290
	Iceland	0	33	33	98
	Italy	-	0	-	0
	Netherlands	-	0	-	0
	Switzerland	-	-	-	0
	United Kingdom	0	0	0	0
	<b>Region Total</b>	98	175	383	426
Eastern Europe	Armenia	0	0	0	-
	<b>Region Total</b>	0	0	0	-
Africa	Egypt	-	-	-	0
	French S. Ter	-	0	-	0
	Ghana	0	0	0	0
	Morocco	-	0	-	0
	<b>Region Total</b>	0	0	0	0
Asia	Afghanistan	-	0	-	0
	China P.R.	0	172	15	551
	Hong Kong	189	135	807	351
	Israel	0	0	29	0
	Japan	0	82	16	273
	Jordan	0	0	0	29
	Korea, South	256	251	344	19,854
	Lebanon	34	34	102	68
	Malaysia	-	14	-	14
	Philippines	-	0	-	0
	Singapore	25	8	100	18
	Thailand	0	0	0	-
	United Arab Emirates	-	1	-	1
	<b>Region Total</b>	504	696	1,412	21,159

*Custom Exports of Wheat Flour †*  
*October 2012*  
*(in metric tonnes)*

WHEAT FLOUR		October, 2012	October, 2011	2012 Crop year to date	2011 Crop year to date
Oceania	American Samoa	0	116	58	174
	Australia	54	0	165	26
	<b>Region Total</b>	54	116	223	200
Western Hemisphere	Anguilla	11	53	24	73
	Antigua	0	0	0	0
	Aruba	0	0	26	0
	Bahamas	337	333	905	947
	Barbados	1	0	2	1
	Bermuda	123	154	395	401
	Br. Virgin Islands	26	67	26	120
	Chile	-	0	-	3
	Costa Rica	17	0	17	23
	Cuba	0	0	0	0
	Dominica	0	1	2	1
	Dominican Republic	0	27	27	27
	Ecuador	-	0	-	0
	El Salvador	-	-	-	0
	Grenada	0	0	0	0
	Guyana	17	18	18	19
	Haiti	-	0	-	29
	Jamaica	0	1	0	8
	Montserrat	-	0	-	0
	Netherlands Antilles	114	139	250	303
	Peru	-	-	-	0
	St. Kitts-Nevis	-	0	-	0
	St. Lucia	1	2	2	4
	St. Pierre & Miquelon	9	23	74	57
	St. Vincent	0	0	0	1
	Trinidad and Tobago	0	0	0	0
Turks & Caicos Islands	11	21	50	75	
United States	13,080	16,360	39,253	45,914	
<b>Region Total</b>	13,748	17,199	41,072	48,006	
<b>Total</b>	14,405	18,189	43,088	69,791	